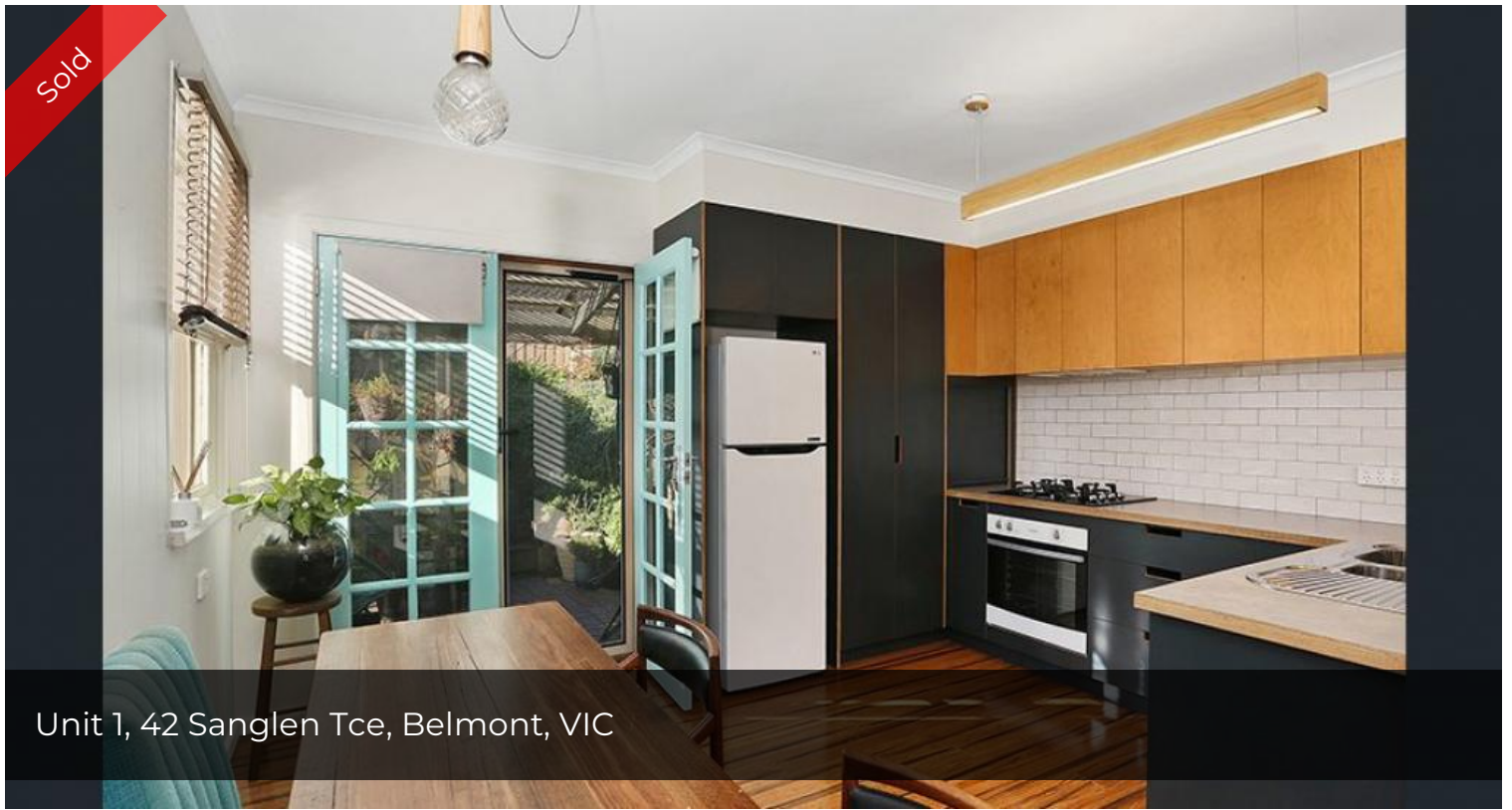


Sold



Unit 1, 42 Sanglen Tce, Belmont, VIC



## Low Maintenance Living a Walk to the Village!

Ideally positioned an easy 500 metre stroll to the vibrant Highton Village, equidistant to both High St and Waurn Ponds Shopping Centres, access to public transport and local schools make this location all about convenience!

Boasting an elevated north facing aspect this immaculate 2br unit provides the owner with a delightful outlook. The property is surrounded by picturesque gardens and includes a sheltered area the perfect spot to relax and enjoy a coffee or glass of wine!

Upon entry through french doors you are greeted with a light filled and functional open plan living space which incorporates an updated kitchen and adj meals area featuring stunning timber floorboards throughout this area. The 2brs are spacious with BIRS and serviced by a modern central bathroom and European laundry.

The unit has year round comfort with S/S A/C. A large garage completes this value packed unit the perfect addition to your investment portfolio or 1st home buyer or downsizer looking to

 2  1  1

Price	SOLD
Property ID	101143

### Sales Representative Details

Jan O'Connor  
0413332686  
janoconnor@stockdaleleggo.com.au

The above information provided has been furnished to us by the vendor/s. We have not verified whether or not that information is accurate and do not have any belief in one way or the other in its accuracy. We do not accept any responsibility to any person for its accuracy and do no more than pass it on. All interested parties should make and rely upon their own enquiries in order to determine whether or not this information is in fact accurate.

Powered By:

