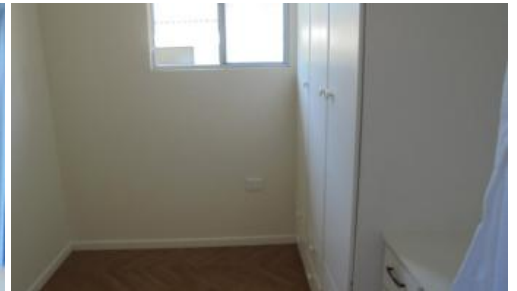




20/210 Pacific Highway, North Boambee Valley, NSW



## Site 20

Fresh on the market, this spacious 2 bedroom home with extra room as a study, will not last long.

This well appointed home is sure to impress. Enter your new home through a quaint verandah, complete with a blind for privacy. Sit and have a cuppa and watch the world go by.

Good sized kitchen with lots of storage room. Large dining room area and air conditioning in the large living area.

Combined bathroom with vanity, toilet & shower. An added bonus, the main bedroom has a separate air conditioner to keep you cool on those warmer nights.

Situated in a sought after location, within the heart of Lime Tree Village, conveniently located to the Hospital and the Coffs Harbour CBD. There is a bus stop right out the front. Enjoy the facilities our village has to offer, sparkling swimming pool & Community Hall. We are pet friendly.

 2  2  1

Price	\$250,000
Property ID	104964

## Sales Representative Details

Graham Williams  
0266521215  
sales@limetreevillage.com.au

For more information please contact us on 02 6652 1215.

---

The above information provided has been furnished to us by the vendor/s. We have not verified whether or not that information is accurate and do not have any belief in one way or the other in its accuracy. We do not accept any responsibility to any person for its accuracy and do no more than pass it on. All interested parties should make and rely upon their own enquiries in order to determine whether or not this information is in fact accurate.

Powered By:



**RELOCATABLE LIVING**  
— .COM.AU